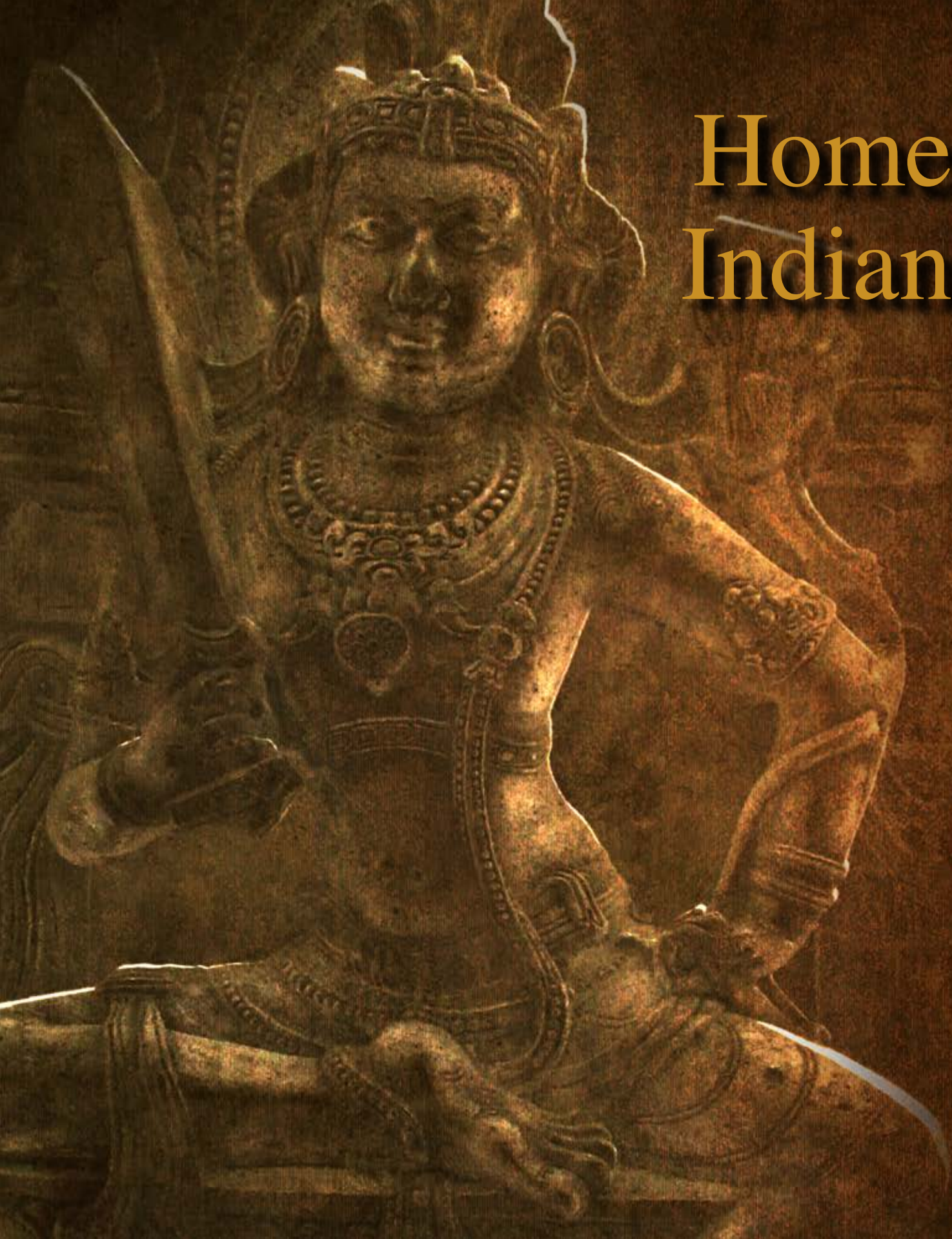


# Homecoming of Indian Treasures









# Homecoming of Indian Treasures

A catalogue of 157 Indian antiquities returned to Government of India by the Government of United States during the visit of Prime Minister Narendra Modi to the United States from 22-25 September 2021





Nataraja. The master of dance. Bronze. Four armed. Lower right is in abhaya mudra while the lower left is thrown across his body; the upper left holds a flame in open palm, the right hand carries a damaru. He is trampling the dwarf demon, abhasmara purusha. The left leg is raised diagonally with the foot in the air, while the right leg firmly grounded with a slight bend at the knee. The matted locks of hair touches both the sides of the circular prabhavali, depicting ganga on the right and the snake on the left. On the whole portraying the Ananda thandava, the dance of bliss.

### Nataraja

Middle Chola. 10<sup>th</sup> CE

Provenance - Tamil Nadu.

Measurements - 75 x 66 x 23 cms

Jain shrine with twenty-four Jainas. Bronze. Mahaveera seated on in the middle while two are standing on either side. Rest are shown all over the prabhavali.

### Twenty-four Thirthankaas

12<sup>th</sup> Century C.E.

Provenance - Western India

Measurements - 30 x 18 x 8 cms







Three thirthankaras seated on a pedestal. Bronze. Beautiful prabhavali. There is an inscription (Sanskrit language; nagari script) on the back of the prabhavali. Datable to 12<sup>th</sup> CE. It records the gift of the image by Jasadeva belonging to Brahma gotra

### Thirthankaas

12<sup>th</sup> Century C.E.

Provenance - Central India

Measurements - 19 x 22 x 8 cms



Schist. Standing. Four armed. Holding chakra in upper left and gadha in right; lower right in varada and left is holding sanku. Profusely ornamented.

### Vishnu

12<sup>th</sup> Century C.E.

Provenance - South India

Measurements - 94 x 51 x 17 cms





Could be identified as shiva because of jata makuta and the trinetra (third eye).

### Head of Shiva

12<sup>th</sup> Century C.E.

Provenance - Central India

Measurements - 11 x 9 x 6 cms



Black stone sculpture of the Buddhist pantheon. Beautifully ornamented and elegantly sculpted.

### Tara

12<sup>th</sup> Century C.E.

Provenance - Central India

Measurements - 60 x 32 x 11.5 cms





Jaina choubisi. A thirthankara standing in the centre with rest of them shown on the prabhavali. Sand stone.

### Twenty-four Tirthankara

12<sup>th</sup> Century C.E.

Provenance - Western India

Measurements - 47 x 34 x 10 cms



Black stone sculpture depicting a seated Deity flanked by two consorts, Seated on a pedestal under a tree.

### A male deity flanked by two consorts

12<sup>th</sup> Century C.E.

Provenance - Western India

Measurements - 29.5 x 20.5 x 7.5 cms





A Celestial God. Standing with a child on the right waist.  
Beautifully ornamented. A dwarf figure on either side. Fruit bearing  
tree at the back. Broken in 3 pieces mended.

### Apsara

12<sup>th</sup> Century C.E.

Provenance - Central India

Measurements - 119 x 33 x 17 cms

Vishnu. Bronze. Standing four-armed. Holding lotus in upper left  
hand and chakra in upper right. Lower hands broken at wrists.  
Sridevi is shown standing on a lotus pedestal, on the right and on  
the left, bhudevi is missing. Elongated prabhavali. An inscription on  
the back of the pedestal. An Inscription in Sanskrit language and  
Gudiya script on the back of the pedestal reads 'vudha-dharmo-  
samgha sri-suryoprabhasya'. Probably, one suryoprabhasya  
gifted the image. It's in Sanskrit language and Gudiya script of 11<sup>th</sup>  
century CE, In three pieces.

### Standing Four Armed Bronze Vishnu

11<sup>th</sup> Century CE

Provenance - Eastern India

Measurements - 28 x 16 x 8 cms







### Chowri Bearer

12<sup>th</sup> Century C.E.

Provenance - Central India

Measurements - 69 x 27 x 18 cms

A female figure standing in tribhanga, with a chamara, or fly whisk, in left hand. Right hand holding the long overhanging garment. Part of a sculpture and carved on the right portion of the prabhavali. On the left shown are a figure on a knee in worshiping posture and standing male figure with a lotus at the back. Limited ornamentation.

### Bodhisattva Manjushri

10<sup>th</sup> Century CE

Provenance - Bengal / Orissa Region

Measurements - 46 x 29 x 11 cms

Bodhisattava. Manjushri. Black Stone (Schist). Seated in maharajanasa on a pedestal. He is the most significant bodhisattva in Mahāyāna literature. He symbolises the embodiment of prajñā (transcendent wisdom).

His right hand is in varada posture. Left hand holding a long stalk of lotus on which is shown seated the Buddha. On the right top also a buddha image is shown. Well ornamented. Lion shown on both sides of the pedestal. Probably of Pala period.







Shiva & Parvati seated on Nandi. Uma seated on left lap of Shiva. Shiva embracing Parvati. Beautifully ornamented.

### Uma Mahesvara

10<sup>th</sup> Century C.E.

Provenance - South India

Measurements - 40 x 27 x 10 cms



Seated. In Padmasana & Dhyana mudra. Flanked by a male attendant on either side. Halo behind the head. Srivatsa symbol on the chest and lotus symbol on the palm/feet. Sandstone

### Thirthankara

11<sup>th</sup> – 12<sup>th</sup> CE.

Provenance - Bengal / Orissa Region

Measurements - 60 x 60 x 31 cms





Bas relief. Red Sandstone. Both standing in sama bhanga (straight). Male figure is holding a flower in right hand and the left hand is on the waist. The female figure is also depicted in similar fashion. She has an elaborate head dress.

### Amorphous Couple

12<sup>th</sup> Century C.E.

Provenance - Central India

Measurements - 56 x 37 x 16 cms



### Revanta

10<sup>th</sup> Century C.E.

Provenance - Western India

Measurements - 154 x 75 x 24 cms

Bas Relief Panel Sandstone. Revanta is the son of Sun God Surya and always shown riding horses. Worshiped as guardian deity of dangers from the forest. 3 Male figures riding on horses surrounded by attendants. Few figures are shown playing musical instruments. Ashtaganas are shown on the top.

The central figure being Revanta.





### Stele of Varaha

Stele of Varaha [ Avatar of Vishnu] Rescuing the Earth  
8<sup>th</sup>-10<sup>th</sup> Century,  
Pala Dynasty  
110 x 58.4x 19.7cms  
Black Phyllite Stone



### Bodhisattva of Wisdom

Eastern Bihar or adjoining areas of West Bengal  
10<sup>th</sup>-11<sup>th</sup> Century Schist  
Pala Period  
83x46x20 cms  
Beautifully carved on Schist, it depicts the deity holding a sword

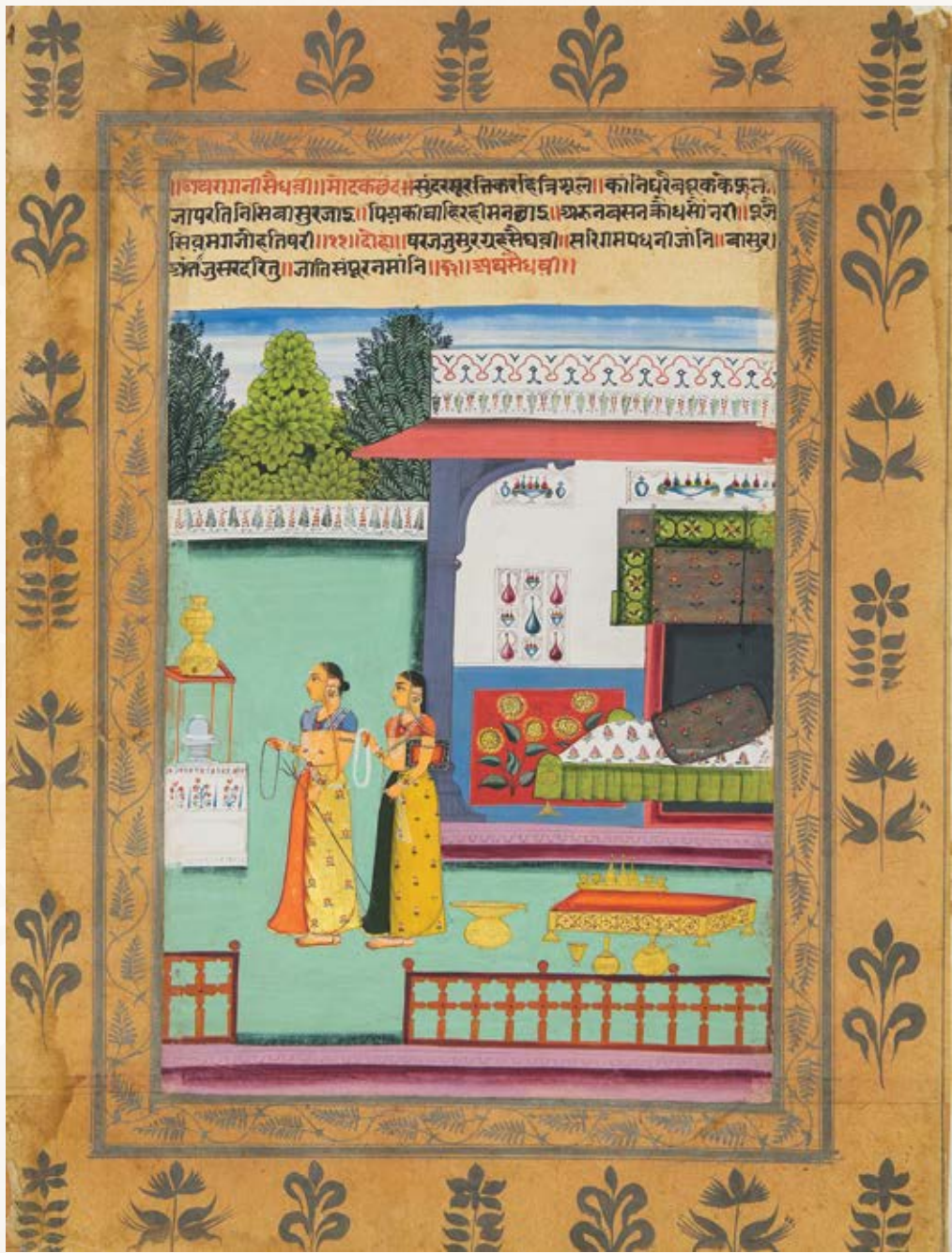




### Lingodhbhava

This object is depicting Siva as Lingodhbhava. Such images are generally placed in the niche on the western side of any Siva temple. The image depicts a four-armed Siva within the linga, representing the eternal flame. On the bottom Vishnu is depicted as a boar digging deep into the earth. Brahma is depicted as a swan flying to reach the sky.

Circa 12<sup>th</sup>-13<sup>th</sup> Century  
Late Chola Period, Tamil Nadu  
106 x 56x25 cms  
Black Phyllite Stone



### Paper Painting depicting Rasikpriya

This is a large painting on paper by an anonymous painter depicting the scene possibly influenced by the famed works of Rasikapriya composed by poet Keshava Das [ 1555-1617]

The reverse of the painting bears a rubber stamp marking which clearly states that it once formed part of the personal collection of Maharaja of Bikaner and was duly accessioned in 1964.

1740  
Bikaner Rajasthan  
43.2 X 31.8 cms  
Copper Alloy





### Buddha

Indian Origin

Circa 7<sup>th</sup>-8<sup>th</sup> Century

Red spotted Sandstone

32 X 23.5 X 8 cms



### Copper and Brass Plates with Quranic verses

Indian Origin Late Mughal

20 X 15 cms





### Buddha Head Terracotta (Broken)

Indian Origin  
Gupta Period  
Red spotted Sandstone  
17 X 15 X 9 cmsv



### Head

Indian Origin  
Gupta 5<sup>th</sup> century  
Terracotta  
7 x 6 x 7



### Bull with two Humps

Indian Origin  
5<sup>th</sup> – 3<sup>rd</sup> millennium BCE  
Terracotta with polychrome  
8.8 x 5.5 x 9





#### Buddhist Votive Plaque

Indian Origin  
12<sup>th</sup>-13<sup>th</sup> Century  
Terracotta  
10.8 x 8.3 x 1



#### Bull

Indian Origin  
5<sup>th</sup>-3<sup>rd</sup> millennium BCE  
Terracotta  
3.8 x 5.7 x 4.2



#### Torso of a woman

Indian Origin  
1<sup>st</sup> century BCE-1<sup>st</sup> century CE  
Terracotta  
12 x 8.6 x 0.3  
Fragment



#### Erotic Plaque

Indian Origin  
1<sup>st</sup> century BCE-1<sup>st</sup> century CE  
Terracotta  
5.4 x 6 x 0.6  
Fragment





**Fertility Goddess figure**

Indian Origin  
1<sup>st</sup> century BCE-1<sup>st</sup> century CE  
Terracotta  
5 x 4.5  
Broken at a place



**Erotic Plaque**

Indian origin  
1<sup>st</sup> century BCE-1<sup>st</sup> century CE  
Terracotta  
4.7 x 5.8  
Fragment and cracked



**Buddhist Votive Plaque**

Indian Origin  
12<sup>th</sup>-13<sup>th</sup> Century  
Terracotta  
9.5 x 7.2 x 2



**Cross Plaque**

Indian Origin  
5<sup>th</sup>-7<sup>th</sup> century  
Terracotta  
13 x 7.7 x 5





#### Humped bull

Indian Origin  
5<sup>th</sup> – 3<sup>rd</sup> millennium BCE  
Terracotta  
7.6 x 10.2 x 2.5  
Broken



#### Monkey Figure

Indian origin  
1<sup>st</sup> century BCE-1<sup>st</sup> century CE  
Terracotta  
5.2 x 6.2 x 1



#### Monkey on crocodile

Indian Origin  
1<sup>st</sup> century BCE-1<sup>st</sup> century CE  
Terracotta  
9.5 x 7.2 x 2



#### Circular Plaque Fertility Goddess

Indian Origin  
1<sup>st</sup> century BCE-1<sup>st</sup> century CE  
Terracotta  
12.2 x 4.7





#### Plaque of standing figure

Indian origin  
1<sup>st</sup> century BCE-1<sup>st</sup> century CE  
Terracotta  
5.7 x 4.7  
Holding umbrella like thing in hand.



#### Yakshi and Bird

Indian origin  
1<sup>st</sup> century BCE-1<sup>st</sup> century CE  
Terracotta  
17.5 x 9.5 x 1.5  
Fragment



#### Man Riding Animal

Indian Origin  
1<sup>st</sup> century BCE-1<sup>st</sup> century CE  
Terracotta  
7.5 x 7.2 x 1  
Fragment



#### Plaque of Two figures

Indian Origin  
1<sup>st</sup> century BCE-1<sup>st</sup> century CE  
Terracotta  
7.6 x 5.7





---

**Standing Yakshi**

Indian origin  
1<sup>st</sup> century BCE-1<sup>st</sup> century CE  
Terracotta  
7 x 4.5



---

**Plaque with figure**

Indian origin  
1<sup>st</sup> century BCE-1<sup>st</sup> century CE  
Terracotta  
7 x 5.3 x 0.6  
Broken at a corner



---

**Plaque of Yakshi**

Indian Origin  
1<sup>st</sup> century BCE-1<sup>st</sup> century CE  
Terracotta  
6.5 x 4.8 x 1.9



---

**Pair of Deer**

Indian Origin  
1<sup>st</sup> century BCE-1<sup>st</sup> century CE  
Terracotta  
7.1 x 5.2 x 0.6





---

**Erotic Plaque**

Indian origin  
1<sup>st</sup> century BCE-1<sup>st</sup> century CE  
Terracotta  
7.4 x 5.7



---

**Square Plaque**

Indian origin  
1<sup>st</sup> century BCE-1<sup>st</sup> century CE  
Terracotta  
5 x 4.7  
Depicts horse



---

**Fertility Plaque**

Indian Origin  
1<sup>st</sup> century BCE-1<sup>st</sup> century CE  
Terracotta  
5 x 5.5



---

**Fertility Goddess sitting with star**

Indian Origin  
1<sup>st</sup> century BCE-1<sup>st</sup> century CE  
Terracotta  
16 x 5





Plaque with two figures (Mithuna)

Indian origin

1<sup>st</sup> century BCE-1<sup>st</sup> century CE

Terracotta

6.5 x 7.8



Plaque of Erotic couple

Indian origin

1<sup>st</sup> century BCE-1<sup>st</sup> century CE

Terracotta

7 x 4.9 x 1



Female figurine

Indian Origin

5<sup>th</sup> – 3<sup>rd</sup> century BCE

Terracotta

11.5 x 3.5 x 2.5

Hand broken



Plaque of Buffalo in water and Tiger

Indian Origin

1<sup>st</sup> century BCE-1<sup>st</sup> century CE

Terracotta

6 x 6.5 x 0.8





---

**Erotic Couple**

Indian origin  
1<sup>st</sup> century BCE-1<sup>st</sup> century CE  
Terracotta  
5.5 x 6.2 x 0.8



---

**Erotic Plaque**

Indian origin  
1<sup>st</sup> century BCE-1<sup>st</sup> century CE  
Terracotta  
6.2 x 4.6



---

**Erotic Couple Plaque**

Indian Origin  
1<sup>st</sup> century BCE-1<sup>st</sup> century CE  
Terracotta  
4.7 x 6.3



---

**Pendent (painted on all sides)**

Indian Origin  
3<sup>rd</sup>-2<sup>nd</sup> millennium BCE  
Terracotta  
6 x 3.8 x 2.5  
Belongs to Harappan culture.





#### Erotic Plaque

Indian origin

1<sup>st</sup> century BCE-1<sup>st</sup> century CE

Terracotta

6.7 x 5.3 x 1



#### Erotic Plaque

Indian origin

1<sup>st</sup> century BCE-1<sup>st</sup> century CE

Terracotta

7.2 x 6

Broken



#### Erotic Plaque

Indian Origin

1<sup>st</sup> century BCE-1<sup>st</sup> century CE

Terracotta

5.7 x 6.6



#### Yakshi

Indian Origin

1<sup>st</sup> century BCE-1<sup>st</sup> century CE

Terracotta

10.5 x 5.8

Fragment





#### Pitcher

Indian origin  
9<sup>th</sup> – 10<sup>th</sup> century  
Terracotta  
21.6 x 20.3 x 14  
Polychrome painted.



#### Head

Indian origin  
Gupta c. 4<sup>th</sup> century  
Terracotta  
10.5 x 7  
Broken and fragment



#### Bird with wheels

Indian Origin  
1<sup>st</sup> century BCE-1<sup>st</sup> century CE  
Terracotta  
12.1 x 5.1 wheel dim 3.2  
Wheels are attached later.



#### Terracotta mould

Indian Origin  
Gupta period 5<sup>th</sup> century  
Terracotta  
24.1 x 16.5 x 4.2  
Durga killing Mahisha





**Female figurine**  
Indian origin  
5<sup>th</sup> – 3<sup>rd</sup> Century BCE  
Terracotta



**Head**  
Indian origin  
Gupta period 5<sup>th</sup> century  
Terracotta  
10.5 x 7



**Female Head**  
Indian Origin  
Gupta period 5<sup>th</sup> century  
Terracotta  
519.1 x 7.8



**Seated mother Goddess**  
Indian Origin  
Gupta period 5<sup>th</sup> century  
Terracotta  
19.1 x 10.8 x 8.5





---

**Yakshi plaque**

Indian origin  
1<sup>st</sup> century BCE-1<sup>st</sup> century CE  
Terracotta  
12.6 x 10.4 x 1.4  
Fragment



---

**Rattle of Kubera**

Indian origin  
1<sup>st</sup> century BCE-1<sup>st</sup> century CE  
Terracotta  
11 x 5.5 x 5



---

**Yaksha**

Indian Origin  
1<sup>st</sup> century BCE-1<sup>st</sup> century CE  
Terracotta  
13.5 x 8.7 x 6  
Hollow at back



---

**Kubera or Yaksha**

Indian Origin  
1<sup>st</sup> century BCE-1<sup>st</sup> century CE  
Terracotta  
13 x 6 x 5.5





#### Bowl

Indian origin  
4<sup>th</sup> -3<sup>rd</sup> century BCE  
Terracotta with polychrome  
7.6 x 17.8  
Broken and mended



#### Head

Indian origin  
Gupta period 5<sup>th</sup> century  
Terracotta  
7 x 4.8  
Broken and fragment



#### Head

Indian Origin  
Gupta 5<sup>th</sup> century  
Terracotta  
6



#### Two Bulls

Indian Origin  
5<sup>th</sup> -3<sup>rd</sup> millennium BCE  
Terracotta with polychrome  
7.3 x 10.2





#### Cow

Indian origin  
1<sup>st</sup>-2<sup>nd</sup> Century CE  
Terracotta with polycrome  
7.2 x 4.6 x 3.2  
Broken and mended



#### Standing Monkey

Indian origin  
Gupta period 5<sup>th</sup> century  
Terracotta  
11.5 x 7.5 x 5



Standing. Four armed. Two female figures are shown on either side. Excessively ornamented.

#### Vishnu

Schist stone  
14<sup>th</sup> CE  
Provenance - South India  
Measurements - 132 x 56 x 7 cms







A male and a female figure standing in a niche.

### Amorous Couple

Sandstone

Provenance - Central India

Measurements - 58 x 48 x 11 cms



Three-headed, two-armed holding Kamandala in left hand and rosary in right hand.

### Brahma

Basalt stone

16<sup>th</sup>-17<sup>th</sup> CE

Provenance - Central India

Measurements - 97 x 45 x 9 cms





### A bust of male figure (Bodhisattva Maitreya)

Sandstone  
14<sup>th</sup> CE  
Provenance - Central India  
Measurements - 42 x 27 x 9 cms



Riding on a chariot drawn by seven horses.

### Surya

Relief sculpture  
Provenance - Central India  
Measurements - 94 x 51 x 17 cms





### A female deity

Well ornamented. Bronze.

Provenance - Tamil Nadu

Measurements - 61 x 24 x 24 cms

Standing, two-armed, holding lotus in the left arm and the right is hanging down in katihasta.



### Female figure

Relief sculpture

Circa 12<sup>th</sup> CE

Measurements - 52 x 15 x 15 cms

Standing female figure with folded hands






---

Standing Tirthankara with a decorative Prabhavali behind the head.

---

### Jaina Tirthankara in standing posture

Sandstone  
Provenance - Central India  
Measurements -47 x 34 x 10 cms




---

Bust of Siva as Dakshinamurti.

---

### Dakshinamurti

Granite  
11<sup>th</sup> -12<sup>th</sup> CE  
Provenance - Tamil Nadu  
Measurements -49 x 42 x 16 cms





Nandi, the vehicle of Siva is depicted in human form.

### Nandikesa

Bronze

12<sup>th</sup> CE

Provenance - Tamil Nadu

Measurements -35 x 14 x 13 cms



Right hand in abhaya mudra. Simple halo behind.

### Standing Buddha

Bronze

14<sup>th</sup> -15<sup>th</sup> CE

Provenance - Eastern India

Measurements -35 x 10 x 9 cms





### Vase with moulded design on the body.

Teracotta

1<sup>st</sup> century AD.

Provenance - Eastern India

Measurements -20 x 10 x 10 cms



### Male figure

Bronze

14<sup>th</sup> CE

Provenance - South India

Measurements -41.5 x 18 x 13 cms





---

Well ornamented, beautiful head dress.

---

### Bust of a male

Sandstone  
12<sup>th</sup> CE  
Provenance - Central India  
Measurements -53 x 34 x 15 cms



---

Serene face of closed eyes, button shaped curly hair. Curved lips and sharp nose.

---

### Buddha Head

Sandstone  
8<sup>th</sup> Century  
Provenance - Central India  
Measurements -29 x 19 x 21 cms





The panel depicts eight-armed Vishnu wrestling with a demon. Vishnu standing on right leg with the left leg pressing on the lower back of the demon. Vishnu holding demon's hand and leg with his middle hands twist the neck of the demon. Surrounded by soldiers holding weapons. The Chakra on the upper right hand helps in identifying Vishnu.

### Panel depicting Vishnu in a battle scene

Red Sandstone  
12<sup>th</sup> CE  
Provenance - Central India  
Measurements -42 x 80 x 20 cms



### Female figure probably a Salabhanjika

Sandstone  
12<sup>th</sup> Century  
Provenance - Central India  
Measurements -72 x 30 x 16 cms





Composite image of Siva on the right and Parvathi on the left.  
Beautiful execution.

### Ardhanarisvara

Basalt

12<sup>th</sup> CE

Provenance - Tamil Nadu

Measurements -42 x 47 x 7 cms



### Panel showing Vishnu and his consort

Sandstone

12<sup>th</sup> Century

Provenance - Central India

Measurements -27 x 86 x 7 cms





Standing, Head, left arm broken and missing, holding unidentified object in the right hand.

### Torso of a male figure

Sandstone

12<sup>th</sup> CE

Provenance - Unknown

Measurements - 63 x 34 x 27 cms



Four armed Vishnu standing on lotus pedestal.

### Standing Vishu

Bronze

16<sup>th</sup> Century

Provenance - South India

Measurements - 38 x 16 x 16 cms





Standing, holding chakra and sankha in upper hands: lower right in abhaya mudra and lower left in kati hasta.

#### Four armed Vishnu

Bronze

12<sup>th</sup> CE

Provenance - Tamil Nadu

Measurements - 50 x 21.5 x 15 cms



Siva emerging from linga. Bramha is shown above while Vishnu is depicted as a boar below.

#### Lingodbhava

Granite

12<sup>th</sup> Century

Provenance - South India

Measurements - 61 x 21 x 17.7 cms





### A female deity

Bronze

14<sup>th</sup> CE

Provenance - South India

Measurements - 84 x 41 x 18 cms

Standing with two arms, broken below ankle.



### Torso of a male figure

Sandstone

3<sup>rd</sup>-4<sup>th</sup> CE

Provenance - Central India

Measurements - 59 x 28 x 12 cms

Bodhisattva





### Two male figures standing on a corner stone

Well ornamented, Sandstone

12<sup>th</sup> CE

Provenance - Central India

Measurements - 41 x 25 x 17 cms



### Siva

Red Sandstone

14<sup>th</sup> CE

Provenance - Central India

Measurements - 61 x 54 x 11 cms





Four-armed. The left upper arms probably hold Bhudevi, though not clearly seen.

### Vishnu

Schist

12<sup>th</sup>-13<sup>th</sup> CE

Provenance - Central India

Measurements - 72 x 36 x 8 cms



Holds various weapons in her 8 arms.

Ferocious representation.

### Durga

Schist

12<sup>th</sup> CE

Provenance - South India

Measurements - 69 x 34.5 x 10 cms





Two-armed standing in Samabhanga holding probably Padma in right hand which is folded and kept on chest. Left hand broken at elbow. Serene face. Beautiful head dress, ear ornaments, necklaces and waist bands etc. Also wearing a long garland of lotus buds. Human beings, horse, elephant etc are shown on the Prabhavali which is broken on the top.

### Padmapani

Well ornamented, Sandstone

14<sup>th</sup> – 15<sup>th</sup> CE.

Provenance - Western India

Measurements - 65 x 48 x 11 cms



Broken in to three pieces.

### Plaque with a female figure

Terracotta

2<sup>nd</sup> CE

Provenance - Eastern India

Measurements - 16 x 7 x 2.5 cms





### Plaque with a female figure

Terracotta

2<sup>nd</sup> CE

Provenance - Eastern India

Measurements - 10.5 x 8.5 x 1 cms



### Dakshinamurthy Siva

Schist stone

10<sup>th</sup> CE

Provenance - South India

Measurements - 60 x 23 x 16 cms





### Uma Mahesvara

Sandstone

12<sup>th</sup> CE

Provenance - Central India

Measurements - 99 x 56 x 18 cms

Seated on Pedestal. Parvati on right lap of Siva. Parvati embracing Siva with her right hand. Siva's upper right arm and right leg broken. Lower right arm is broken from wrist and with his lower left arm is embracing Parvati. Nandi and lion shown below the pedestal. Bramha & Vishnu shown above Uma Mahesvara on the Prabhavali while Ganesha and Kartikeya on the lower part. Sun shaped halo behind the head. Beautifully ornamented.



### Terracotta tile depicting a pair of deer

Schist stone

12<sup>th</sup> CE

Provenance - Eastern India

Measurements - 44 x 29.5 x 6 cms





Plaque showing a male and a female figure in two frames.

Terracotta

8<sup>th</sup> CE

Provenance - Eastern India

Measurements - 49 x 37 x 6 cms



Vase

Terracotta

2<sup>nd</sup> AD

Provenance - Eastern India

Measurements - 21.5 x 11 cms






---

Standing, four armed

---

### Vishnu

Granite

12<sup>th</sup>-13<sup>th</sup> CE.

Provenance - South India

Measurements - 78 x 36.5 x 19 cms




---

Seated in Lalitasana, three-headed four-armed right lower arm probably holds along weapon (partly broken). Left lower holding Kamandala. Profusely ornamented and has elaborate head gear.

---

### Brahmi

Schist

5<sup>th</sup> – 16<sup>th</sup> CE.

Provenance - Eastern India

Measurements - 58 x 41 x 17 cms





### Uma Maheshwar

Circa 11th CE

Measurements - 99 x 56 x 18 cms



### Durga

Granite

14<sup>th</sup> CE.

Provenance - South India

Measurements - 108 x 44 x 14 cms





### Female figure

Sandstone  
12<sup>th</sup> CE  
Provenance - Central India



### Goddess Parvati

Granite  
Circa 11<sup>th</sup> Century CE  
Provenance - Central India

Parvati standing in tribhanga posture over a pedestal.





Standing right arm broken left arm holding a lotus. Wearing a necklace. Beautiful head gear. Circular Halo behind the head. Legs broken below knee.

### Bodhisattva

Red Sandstone

12<sup>th</sup> CE

Provenance - Central India

Measurements - 65 x 29 x 11 cms



A female in standing posture wearing usual ornaments.

### Female figure.

Stone

14<sup>th</sup>-15<sup>th</sup> CE.

Provenance - Central India

Measurements - 72 x 10 x 15 cms





Surya on chariot drawn by 7 horses

Bronze

16<sup>th</sup> CE

Provenance - Eastern India

Measurements - 13 x 6 x 3 cms



Balakrishna

Bronze

16<sup>th</sup> CE

Provenance - Tami Nadu

Measurements - 26 x 11 x 12 cms





Iron sword. Inscription on the sword mentions the name of the Sixth Sikh religious Guru Hargobind Das. The inscription is in Persian language and written in Nastaliq style of Calligraphy

### Sword with sheath

**Bronze**

18<sup>th</sup> CE

Provenance - Punjab

Measurements - 63 x 8.5 x 5.5 cms



Seated. Holding a long stalk of lotus. Beautifully ornamented.

### Manjushri

**Bronze**

16<sup>th</sup> CE

Provenance - Eastern India

Measurements - 8.5 x 6 x 4.5 cms





The undefined shape of the object is similar to a human being. This is usually found in copper hoards, mainly in Yamuna-Ganga doab. They are associated with ochre coloured pottery. The purpose is still being debated with some scholar saying this is a weapon while others say it is a ritualistic object.

### Anthropomorphic Figure

Copper

1800 – 2000 BC

Provenance - North India

Measurements - 54 x 59.5 cms



Lakshmi seated on the right lap of Vishnu, who is four-armed with attributes and mudras.

### Lakshmi Narayana

Bronze

16<sup>th</sup> CE

Provenance - Eastern India

Measurements - 8.5 x 6 x 4.5 cms





Serene facial expressions. Right arm in abhaya.  
Legs below ankle are broken

### Standing Buddha

Bronze

14<sup>th</sup>-15<sup>th</sup> CE

Provenance - Eastern India

Measurements - 25 x 4.5 x 3 cms



Standing and playing the drum with her left hand while the right  
hand is raised above head.

### Female playing drum

Red Sandstone

16<sup>th</sup>-17<sup>th</sup> CE

Provenance - Central India

Measurements - 91 x 34 x 17 cms





A male, seemingly a divine figure seated over the double lotus pedestal. Beautifully ornamented.

### Seated Divine figure

Bronze

Provenance - Eastern India

Measurements - 25 x 20.5 x 20.5 cms



### Buddha Head

Sandstone

9<sup>th</sup>-10<sup>th</sup> CE

Provenance - Central India

Measurements - 26 x 17 x 11 cms





Dancing posture with butter ball on the right hand.

### Balakrishna

Bronze

14<sup>th</sup> CE

Provenance - Tamil Nadu

Measurements - 25 x 20.5 x 20.5 cms



Siva as Nataraja

### Nataraja

Bronze

12<sup>th</sup>-13<sup>th</sup> CE

Provenance - South India

Measurements - 8.5 x 7 x 3.5 cms





Siva standing with four arms. A dog shown on the left.

### Bikshatana Murti

Bronze

14<sup>th</sup> CE

Provenance - South India

Measurements - 9.5 x 4.2 cms



Standing on lotus pedestal.

### Vishnu

Bronze

18<sup>th</sup> CE

Provenance - Eastern India

Measurements - 25.5 x 17 x 11 cms





Uma on the left lap of Siva.

### Uma Maheswara

Bronze

18<sup>th</sup> CE

Provenance - Eastern India



Standing, four-armed, elongated prabhavali. Inscription on the back of the prabhavali Sanskrit language and Gudiya script of 10-11<sup>th</sup> CE.

### Vishnu

Bronze

10<sup>th</sup>-11<sup>th</sup> CE

Provenance - Eastern India

Measurements - 28 x 16.5 x 14 cms





Mahaveera seated on the centre and the rest are shown on the prabhavali. A Sanskrit inscription on the back of the prabhavali records the gift of the image by Jāsadēva.

### Jaina Choubisi

Bronze

12<sup>th</sup> CE

Provenance - Central India

Measurements - 30 x 20 x 14 cms



Lying on his back and trying to lick his right foot.

### Balakrishna

Bronze

12<sup>th</sup> CE

Provenance - Tamil Nadu

Measurements - 11 x 5.5 cms





### Male deity

Bronze

16<sup>th</sup> CE

Provenance - South India

Measurements - 25 x 16 x 13 cms



### Brahmi

Bronze

16<sup>th</sup> CE

Provenance - South India

Measurements - 20 x 14.5 x 7.5 cms





Mahaveera seated at the centre while rest of the thirthankaras are shown on the prabhavali.

### Jaina Choubisi

Bronze

13<sup>th</sup> CE

Provenance - Central / Western India

Measurements - 20 x 14.5 x 7.5 cms



Seated on a pedestal.

### Female deity

Bronze

15<sup>th</sup> CE

Provenance - Eastern India

Measurements - 21 x 13.5 x 9 cms





### Male deity

Bronze

18<sup>th</sup> CE

Provenance - South India

Measurements - 12 x 9 x 6.5 cms



### Uma Mahesvara

Bronze

18<sup>th</sup> CE

Provenance - Eastern India

Measurements - 12 x 7x 5 cms





Four-armed. Vidyadharas shown above. Vyala & elephants are shown on either side.

### Dancing Ganesha

Sandstone

12<sup>th</sup> CE

Provenance - Central / West India

Measurements - 12 x 9 x 6.5 cms



This is a fearsome form of Parvati. Skeleton like anatomy. Dancing over a dead body holding skeletons, severed heads and other weapons.

### Chamunda

Granite

12<sup>th</sup> CE

Provenance - Western India

Measurements - 72 x 37 x 15 cms





Fearsome aspect of Siva. Four-armed holding Damaru and Trishul in the upper hands. A dog is shown on the right and a dwarf figure on the left. Siva is holding begging bowl on the lower left.

### Kankalamurti

Bronze

11<sup>th</sup> CE

Provenance - South India

Measurements - 69 x 37 x 27 cms



Standing with folded arms holding axe and deer on the upper arms. Profusely ornamented.

### Nandikesvara

Bronze

11<sup>th</sup> CE

Provenance - South India

Measurements - 52 x 21 x 18.5 cms





### Siva and Parvathi

Bronze

12<sup>th</sup> CE

Provenance - Tamil Nadu

Measurements - 37x31x14 cms

Standing. Siva is four armed. Siva Gently embracing Parvathi with his left hand. Beautifully ornamented.



### Male deity

Bronze

14<sup>th</sup> CE

Provenance - Central / East India

Measurements - 22.5 x 12.5 x 5.5 cms

Standing with his consort on his left and male attendant on the right.



### Jaina Choubisi

Bronze

15<sup>th</sup>-16<sup>th</sup> CE

Provenance - Western India

Measurements - 24 x 15.5 x 5.5 cms

Mahaveera standing at the centre and other thirthankaras shown on the prabhavali.





---

### Bust of a female

Terracotta

14<sup>th</sup> CE

Provenance - Eastern India

Measurements - 15 x 27 x 13 cms



---

Mahaveera standing at the centre and other thirthankaras shown on the prabhavali.

---

---

### Jaina Choubisi

Bronze

15<sup>th</sup>-16<sup>th</sup> CE

Provenance - Eastern India

Measurements -29 x 15 x 10 cms







